



INFINITE BEYOND

LITEPAPER



STAR  WOLFEZ



CONTENTS // INFINITY GAMES

2

Introduction

Introducing Infinity Games

3

Infinity Beyond: The Game

More about the first game

4

Backstory

Dig into the Lore

8

Game Overview

Mechanics, interoperability, and game theory

9

Game Loop

Grow your base and become legendary

13

In-Game Shop

Cosmetics, boosts, and special items

14

Battle Pass

The 100 level, seasonal progression system

15

Web2 to Web3

Our dedication to making Web3 accessible to all

17

Off-Chain Currency

Progression based resources to fuel your growth

18

On-Chain Currency

Premium economic item to speed up your progress

19

Alpha Test

Soft staking update

20

Beta Test

Token unlock mechanics

21

Roadmap

Upcoming features in development

22

Partners and Community

With a little help from friends along the way

INTRODUCING // INFINITY GAMES



Infinity Games is a Web3 native game studio with the vision of bringing blockchain gaming to the masses.

Infinity Games started as a passionate group of NFT enthusiasts exploring how blockchain technology could redefine gaming. Initially building lo-fi games directly in Discord to reimagine Allowlists, they quickly saw a broader opportunity for Web3 gaming to show how blockchain and NFTs can have true utility.

Driven by this vision, the team—now made up of skilled gamers, designers, and engineers—has committed to creating immersive Web3 experiences that appeal to both blockchain enthusiasts and traditional gamers alike.

Our flagship title, Infinite Beyond, aims to bring casual and strategy gamers into the Web3 space. The Infinite Beyond, redefines gaming by mixing Real-Time Strategy, RPG gaming, and high quality pixel art, while leveraging NFTs as dynamic, playable heroes.

We've implemented a seamless onboarding process via Reown (fka WalletConnect), allowing new players to transition effortlessly into Web3 gaming without needing extensive blockchain knowledge. For smooth, gas-free transactions, Infinity Games also uses Skale Network, making in-game interactions fast, cost-effective, and hassle-free.

Infinite Beyond is set to launch initially on mobile and desktop browsers, with a mobile app in the future, reflecting our commitment to accessibility and growth across platforms. Infinity Games envisions a future where Web3 gaming is a widely embraced norm—honest, enjoyable, and beneficial for all.

Our mission at Infinity Games is to bring blockchain gaming to the masses in seamless, familiar, safe, and fun ways.



Gasless, signless gaming



Familiar gameplay with a twist



No barrier to entry, everyone welcome



Tested tokenomics, invisible token

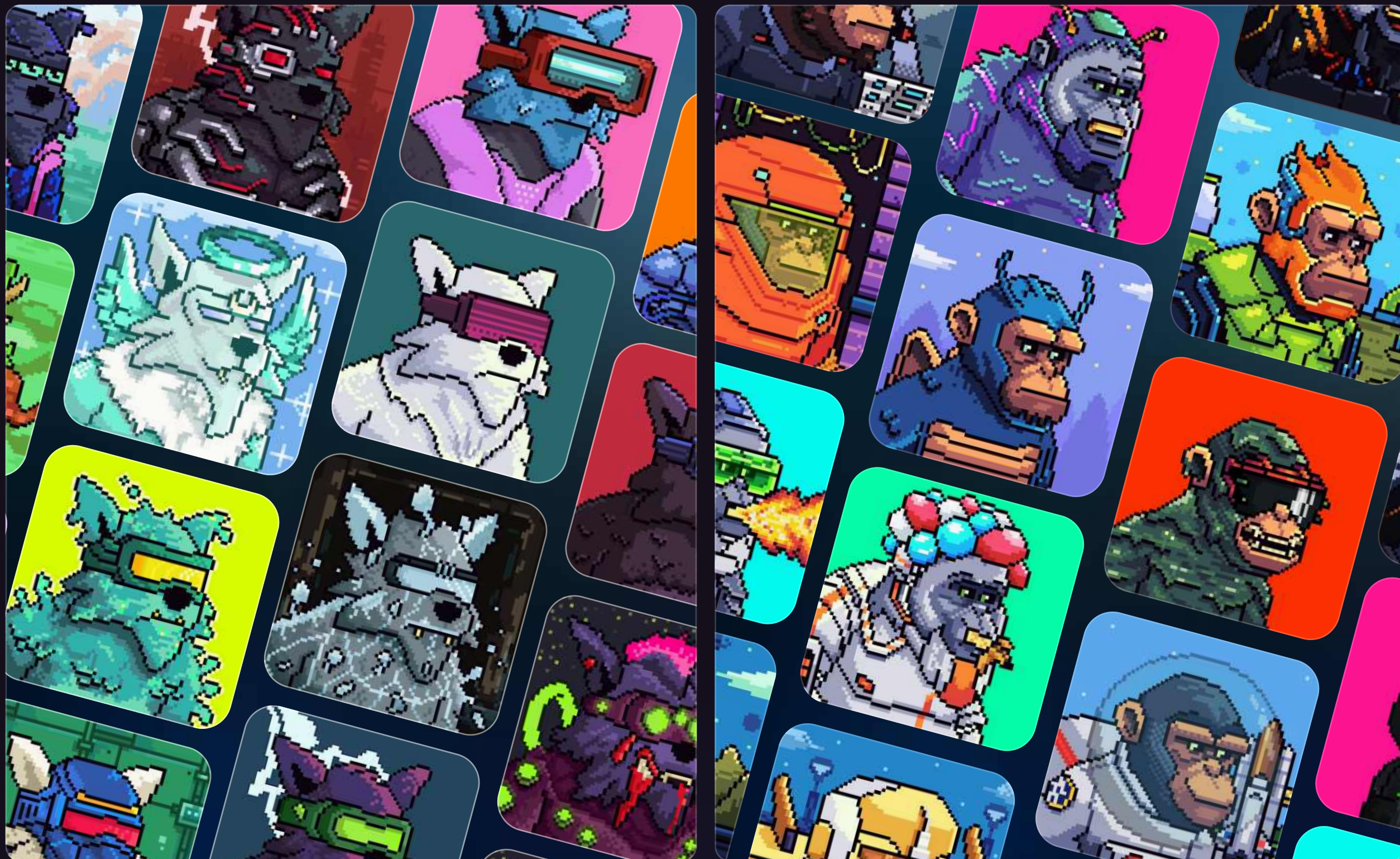


Bring utility (and value) to every NFT



Own your game assets!

Star Wolvez & Galactic Apes



In April 2022, 8,880 Star Wolvez embarked on a journey beyond Planet Earth, leaving their past behind to seek a new life in the Infinite Beyond. It all began with 100 Genesis Wolvez, the elite core of our community. These pioneering Wolvez earned their place through lore creation and intense battles in our early Discord game, emerging as the crown jewels of our ecosystem. But on this journey, they found more than just a new life – they found friends, allies, and a powerful community across the stars.

Among those new allies were the Galactic Apes. Over two years ago, the Galactic Apes rose as an underground sensation among NFT enthusiasts. These charismatic and determined Apes faced countless challenges, drifting from owner to owner with no place to call their own. Yet, despite these hardships, the Apes never lost their resilience or their unique charm.

Their journey finally took a turn when they crossed paths with the Wolvez, sparking an unexpected alliance.

The Wolvez and the Apes discovered that they were bound by shared values and complementary strengths – both communities were forged through struggle and survival, bonded by a fierce loyalty to their own. With aligned goals and a shared vision for the future, the Wolvez and Apes joined forces, signing an intergalactic pact to seek paradise together among the stars.

Now, Galactic Apes enjoy the utility they've long awaited, contributing to the ecosystem with passive Expeditions and generating rewards as they thrive in their new roles. Together, the Wolvez and Apes are building a thriving, collaborative community, stronger than ever.

≡

MENU

CHAWANZO 129

ALLIANCE

Q

SEARCH...

2/5

3,231,123

1.16

SUGGESTION

BUILD STAR LAB?

1H 48M

22M

CHAT

FEED

NEWS

SHOP

PLAY

YOU ARE BEING
RAIDED BY ESOTER

Infinite Beyond is an exciting free-to-play base building strategy game, designed with diverse game modes to cater to all types of players.

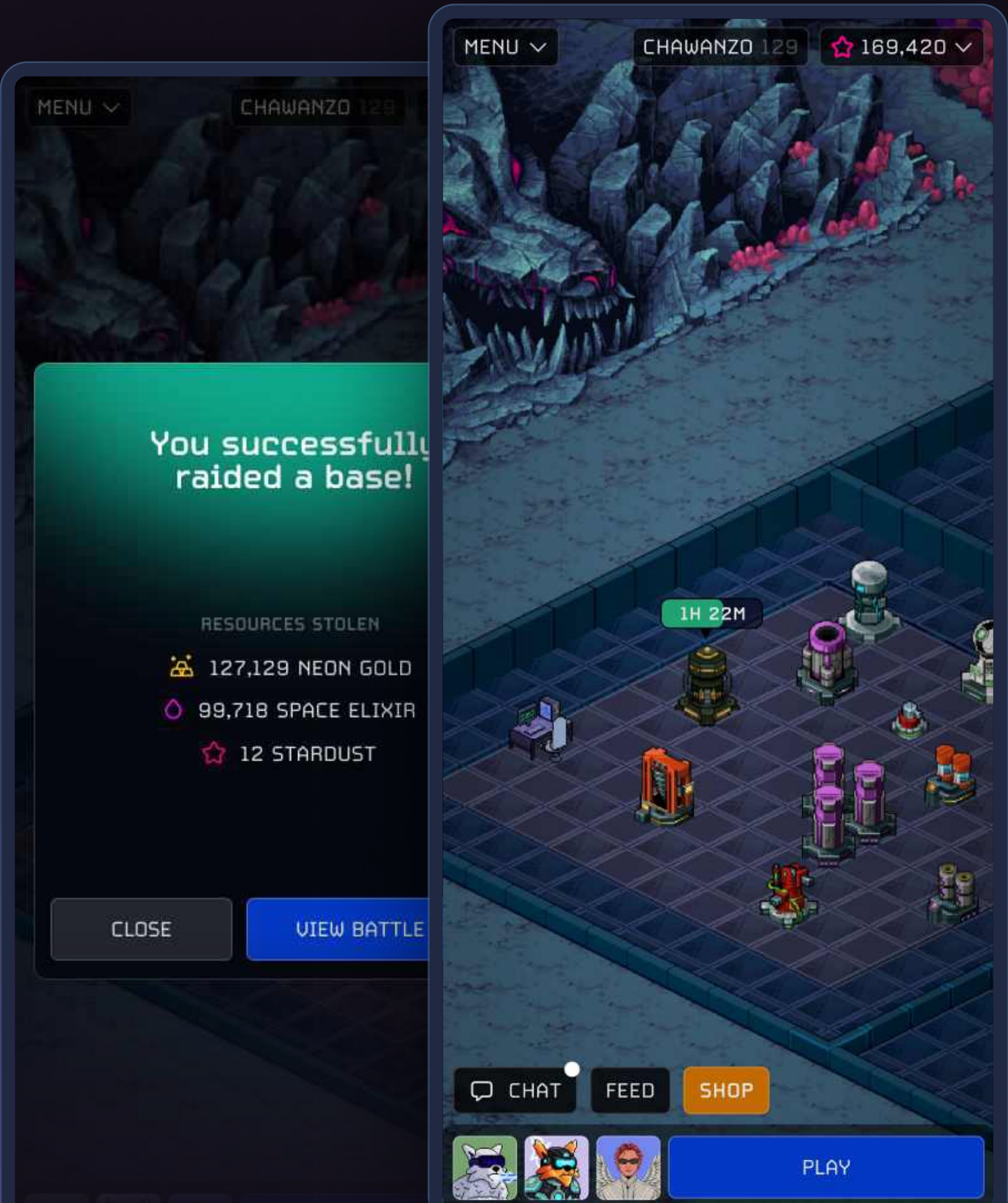


A GAME FOR ALL NFT COLLECTORS

Infinite Beyond is an addictive, casual strategy game that combines base-building, resource management, troop building, and real-time battles.

With over 700,000 compatible NFTs, you can use your favorite NFTs to become a legend in the Infinite Beyond.

No gas – just fun.

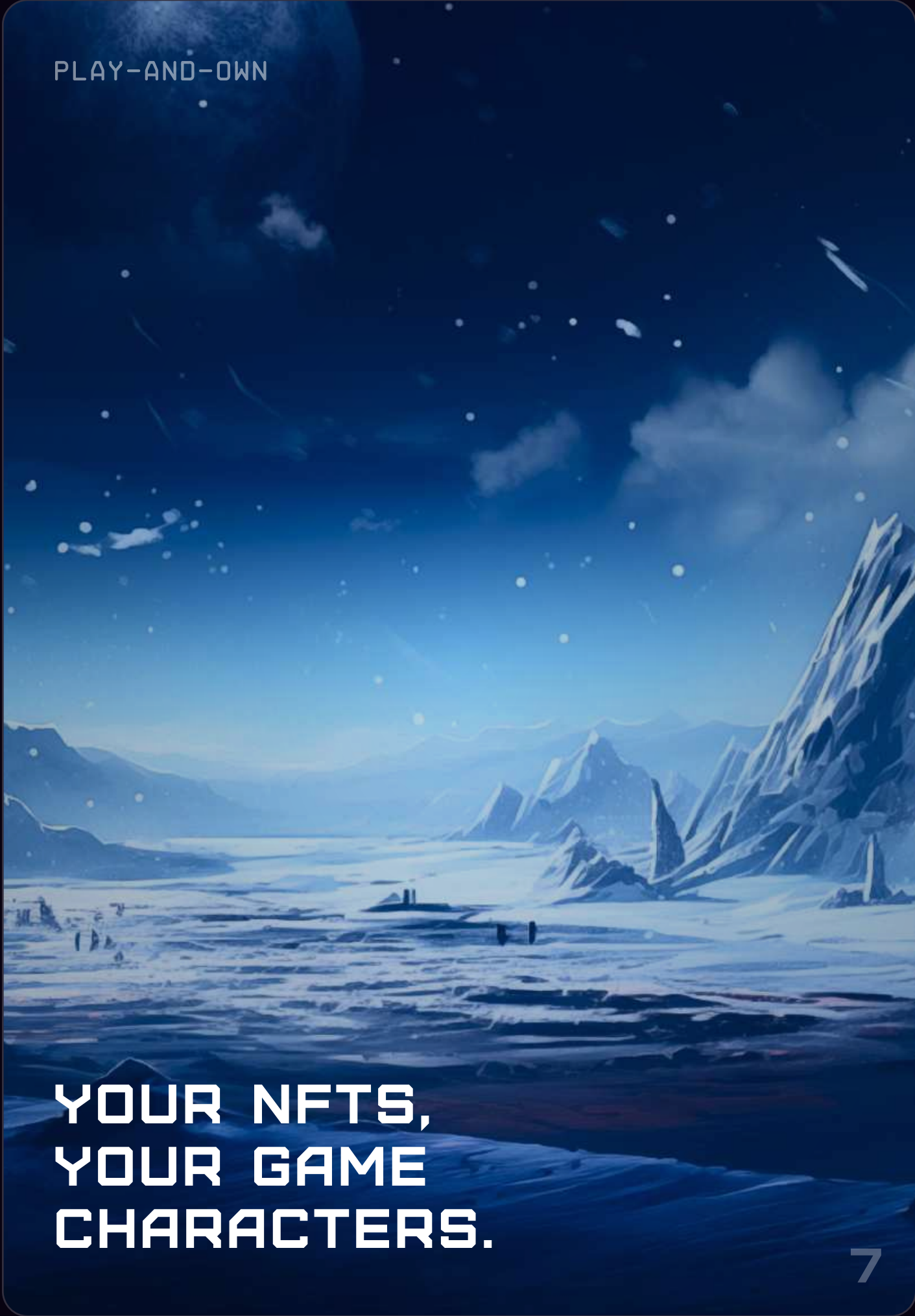


WELCOME!

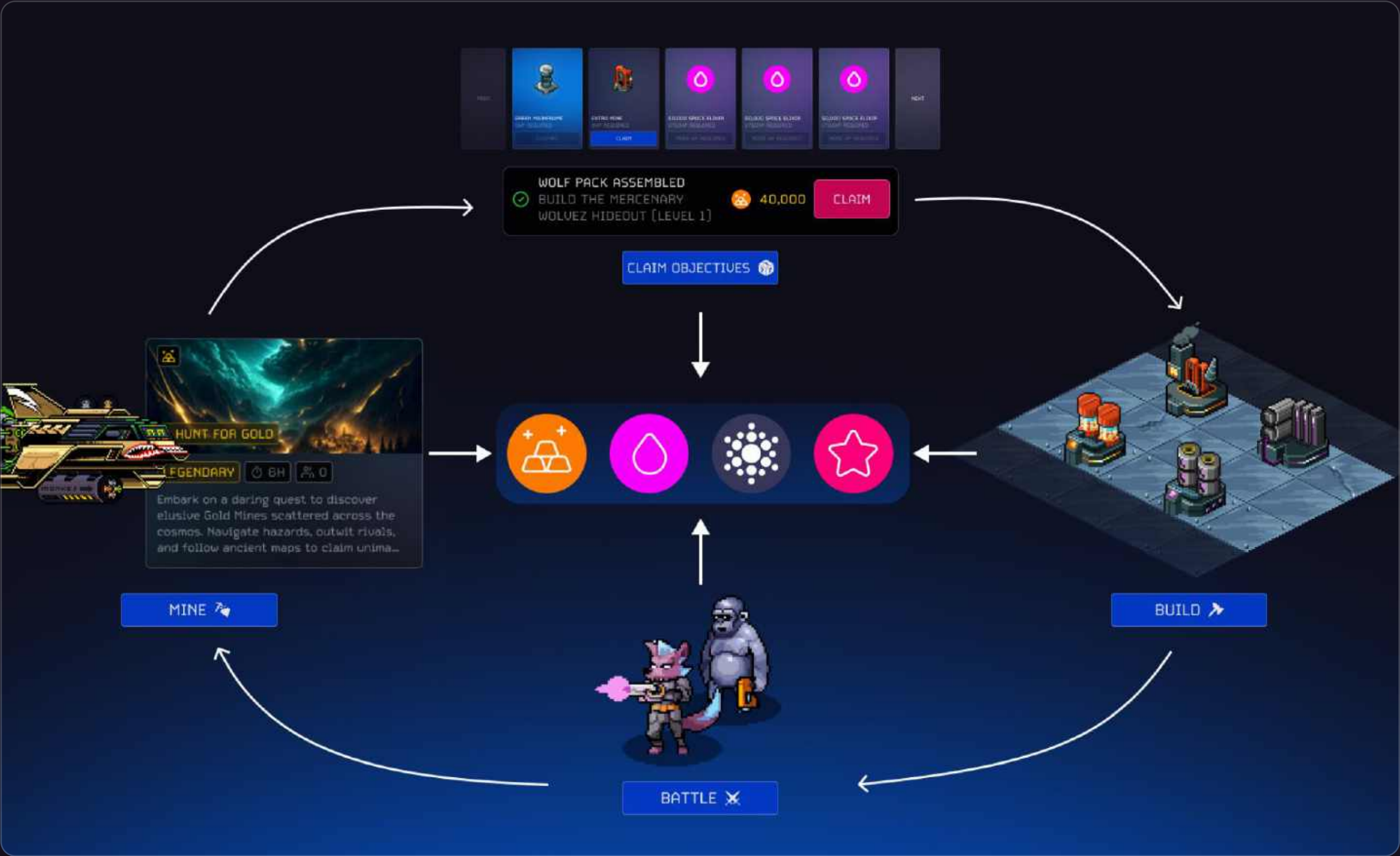
Here are your compatible assets:

+42 OTHERS

START PLAYING



OVERVIEW // INFINITE BEYOND



Infinite Beyond is a free-to-play base-building strategy game with diverse modes for all players. Build, battle, and mine to gather resources and achieve galactic dominance.

BASE BUILDING & RESOURCE MANAGEMENT

In Infinite Beyond, success depends on strategic base management. Players must balance different types of machines to build a well-defended, resource-rich base. Essential resources like Neon Gold and Space Elixir are used to upgrade machines and construct defensive structures. As players advance, upgrading the Mainframe unlocks new building options and enhances defenses, helping protect against potential raiders.

COMPETITIVE PVP MODE: INFINITE ARENA

Infinite Arena is a thrilling PvP mode where players face off in one-on-one battles across the galaxy.

Using a unique predictive combat system, both players input moves simultaneously, adding a layer of strategy and anticipation to each turn.

Compete in ranked matches, climb the leaderboard, and strive to become the top champion in the galaxy.

CHALLENGING PVE MODE: BLOOD ARENA

In Blood Arena, players can test their skills against waves of enemies in a turn-based PvE combat setting. With five waves of foes, this mode provides a classic RPG battle experience, granting experience and valuable resources that can be used to enhance your base. Upcoming expansions will introduce endless dungeons and lore-inspired campaigns, bringing even more depth to the PvE experience.

IDLE RESOURCE COLLECTION: EXPEDITIONS

In Expeditions, players send a crew on idle, time-based resource missions across the galaxy. These missions yield valuable Neon Gold, Space Elixir, Dark Matter, and other items. Expeditions provide a steady flow of resources while players engage in other game modes or irl tasks.

Build



STEP INTO THE INFINITE BEYOND

Build a futuristic base, gather rare resources like Neon Gold and Space Elixir, and upgrade structures to thrive in the space frontier. Develop defenses, train Troops to raid enemy bases, and join alliances for exclusive perks, epic battles, and cooperation against intergalactic foes.

Step 1: Building Your Mainframe

The Mainframe is the heart of your base—it powers your operations and unlocks advanced upgrades. It is your command center. Start by selecting an ideal location in your base to place your Mainframe. Upgrading your Mainframe will open new building options, let you store more resources, and strengthen your defenses.

Step 2: Establishing Resource Production

With your Mainframe in place, it's time to start collecting resources.

In Infinite Beyond, resources fuel your expansion and upgrades. You'll need Neon Gold and Space Elixir—here's how to start collecting them.

Neon Gold Mine produces a steady stream of Neon Gold for building and upgrades. Build and place it strategically to protect it from attacks, collecting gold over time.

Space Elixir Extractor is used to upgrade your units and perform advanced research. Building an extractor will provide a continuous flow of Space Elixir. Just like with the Neon Gold Mine, position it wisely!

Step 3: Building Storage Containers

As your resources accumulate, you'll need a place to store them. Building storage containers allows you to save up for bigger upgrades without losing valuable resources.

Machines & Upgrades

NEON GOLD STORAGE
TIER 1, LEVEL 10

NEON GOLD STORAGE
TIER 2, LEVEL 8

NEON GOLD STORAGE
TIER 3, LEVEL 7

UPGRADE FOR MORE
STORAGE SPACE

UPGRADE FOR MORE DEFENSIVE
HP AND ADDITIONAL BOOSTS

UPGRADE FOR BIGGER
AND BETTER VISUALS

NEON GOLD STORAGE



CURRENT LEVEL
Tier 1, Level 10

HP
1,505 +450 with upgrade

UPGRADE COST
850,000 850,000

UPGRADE TIME
64h

UPGRADE

Machines are the foundational elements of your Homebase. With over 500 machine variants and upgrades, you can make your Homebase unique, impenetrable, and an industrial machine.

As explained on the previous page, your Mainframe is essential for unlocking new Machines, increasing Machine limits, and accessing higher Upgrade Levels.

Upgrading your Mainframe allows you to build more basic Machines and enhance them to advanced levels, significantly boosting your Homebase's capabilities.

Resource storage and extraction Machines follow a tiered system. Upon reaching Level 10, they can be upgraded to a new tier, significantly enhancing efficiency, visuals, and durability (HP).

Tip

The more machines and upgrades you build, the higher your Homebase's HP will be. Meaning, if a pesky intruder attempts to raid your base for resources, they will have a much harder task at hand.

It is highly advisable, but not

Battle



INFINITE ARENA

Infinite Arena is a high-stakes, player-versus-player (PvP) game mode where you face off against other players in a thrilling, strategic showdown.

In Infinite Arena, players input moves simultaneously, adding a fast-paced twist to traditional turn-based RPG battles. Outsmart and anticipate your opponent's actions, carefully planning attacks, defenses, and skills to gain the upper hand. Each victory helps you climb the competitive ranks, earning prestigious rewards and unlocking valuable prizes as you progress, making it the ultimate test of tactical skill and foresight.

Key Feature: Simultaneous turn-based input means that both players' actions resolve at the same time, so predicting your opponent's moves and outmaneuvering them is key to success.

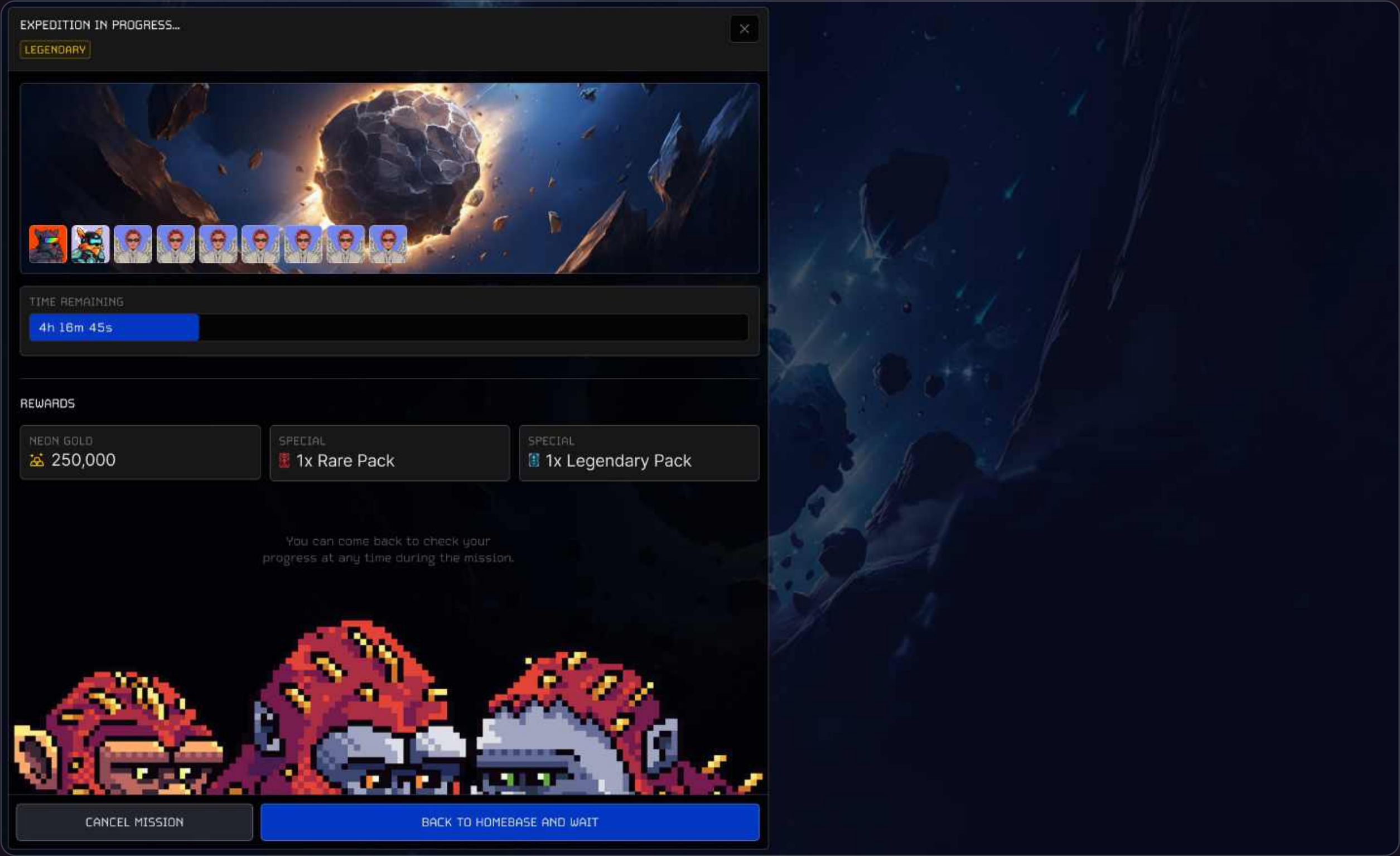
BLOOD ARENA

In Blood Arena, venture into a PvE (player-versus-environment) challenge, where you battle through waves of enemies in classic turn-based RPG combat.

Face off against various foes in sequential turns, using a mix of attacks, skills, and abilities to defeat them. Each victory grants experience points and resources for upgrading your base, units, and unlocking new technologies. As you progress, tougher enemies push you to refine your strategy and build a team capable of facing the galaxy's strongest threats.

Key Feature: Each battle in Blood Arena not only improves your characters through experience points but also rewards you with resources for base upgrades and unit enhancements, making it a core mode for long-term progression.

Expeditions



In Expeditions, players embark on an idle-style adventure, deploying a specialized crew to explore distant planets and asteroids rich in valuable resources.

Each mission varies in rarity and challenge, with rarer missions offering greater rewards like Neon Gold, Space Elixir, and elusive Dark Matter. To start a mission, select a squad of characters from your crew, meeting the unique requirements for each mission type—some may need only a small team, while others demand a larger, more powerful crew.

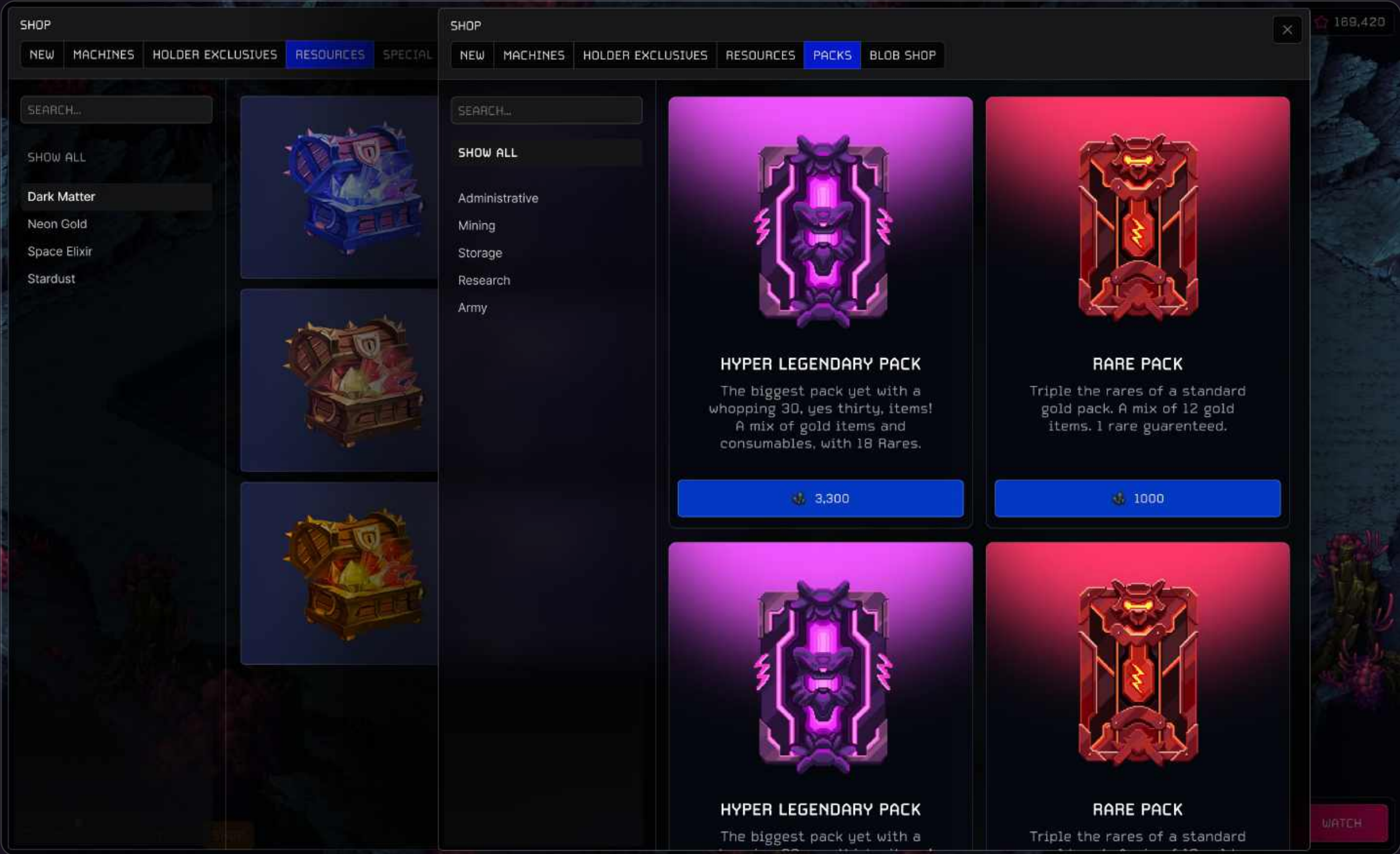
Missions are time-based, meaning that once you send your crew, they'll work independently while you continue with other tasks.

After the set mission duration, your team returns with their findings, granting you resources to fuel your base upgrades and unit development.

Keep an eye out for rare missions, as they offer the best rewards but may require more experienced characters or longer completion times.

Key Feature: Rarer missions yield higher rewards and may require larger crews, making strategic team selection essential for maximizing your resource haul in Expedition Missions.

In-Game Shop



The In-Game Shop is crafted to support player progression and offer optional enhancements across various game modes, keeping gameplay balanced and enjoyable for both free and paying players through Dark Matter.

Faster Progression

Players can speed up base building, upgrades, and troop training, allowing them to advance their base more quickly and unlock higher-level content sooner.

Enhanced PvP and PvE Gameplay

Boosts, such as resource multipliers, XP gains, and battle enhancements, give players a temporary edge in PvP (like Infinite Arena) and PvE (like Blood Arena), helping them earn more rewards and progress faster in rankings or resource accumulation.

Strategic Advantages in Raiding

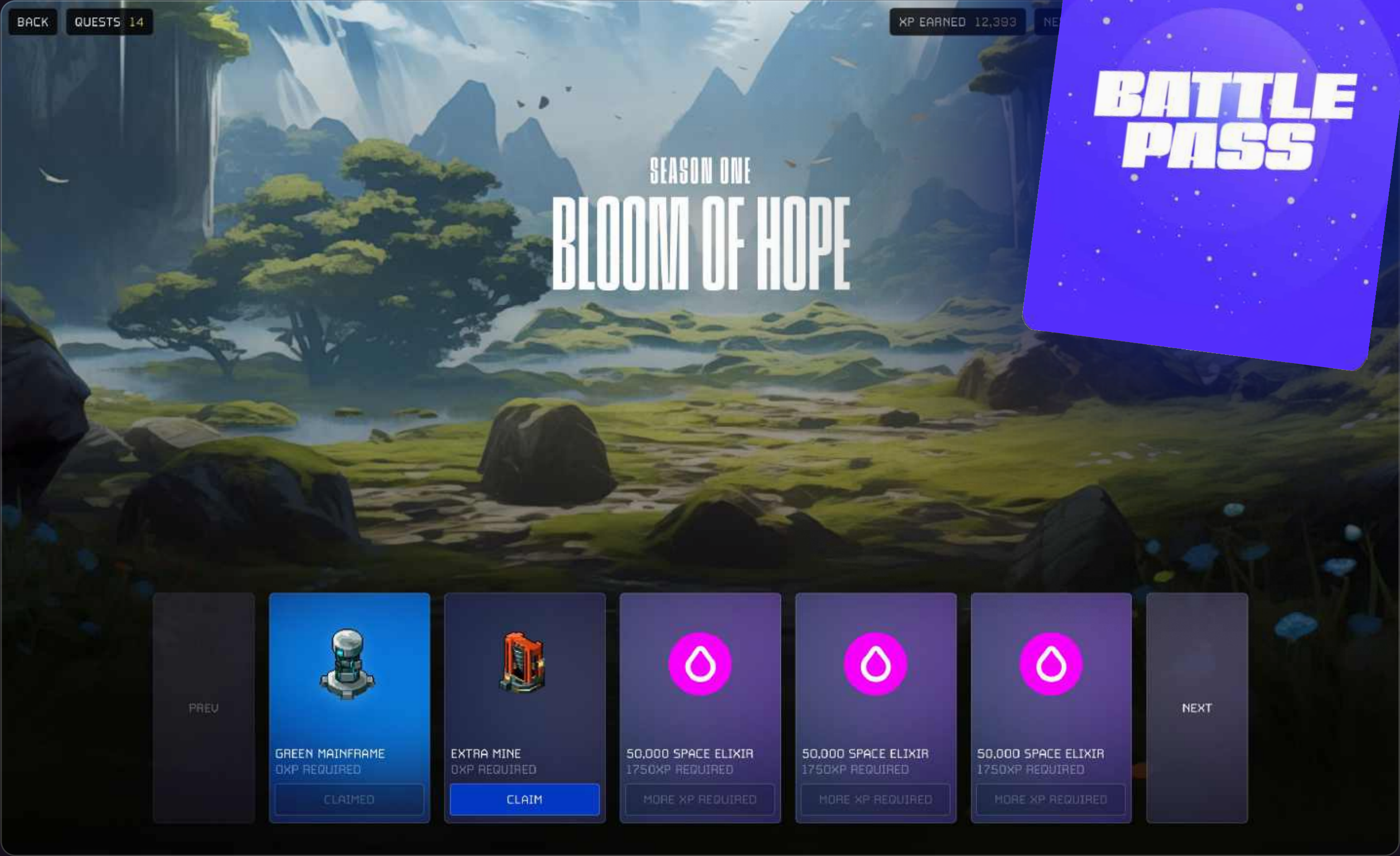
In raid-based gameplay, players can use boosts and special items to strengthen their defenses, keep troops alive, or enhance their attacking power, allowing for more efficient resource collection and protecting their own base.

Protection from Attacks

Shields offer time-based protection against raids, giving players a chance to build and upgrade their base without the risk of losing resources to opponents.

This model allows for flexible, player-driven monetization options that reward engagement and help players optimize their progress, with each purchase designed to complement their chosen playstyle and game mode. More information on Dark Matter/\$Stardust below.

Battle Pass



What's a Battle Pass?

The 100-Tier Battle Pass in Infinite Beyond offers players a rewarding progression system filled with exclusive seasonal items, unique rewards, and powerful boosts. Each season, players progress through the pass by completing rotating objectives across game modes, such as base-building milestones, PvP victories in Infinite Arena, PvE challenges in Blood Arena, and Expeditions. Objectives vary in difficulty and can be completed at your own pace throughout the season.

Seasonal Rewards

Each season introduces new, limited-time rewards, including rare cosmetics, resource boosts, and items packs that enhance gameplay.

Exclusive Items

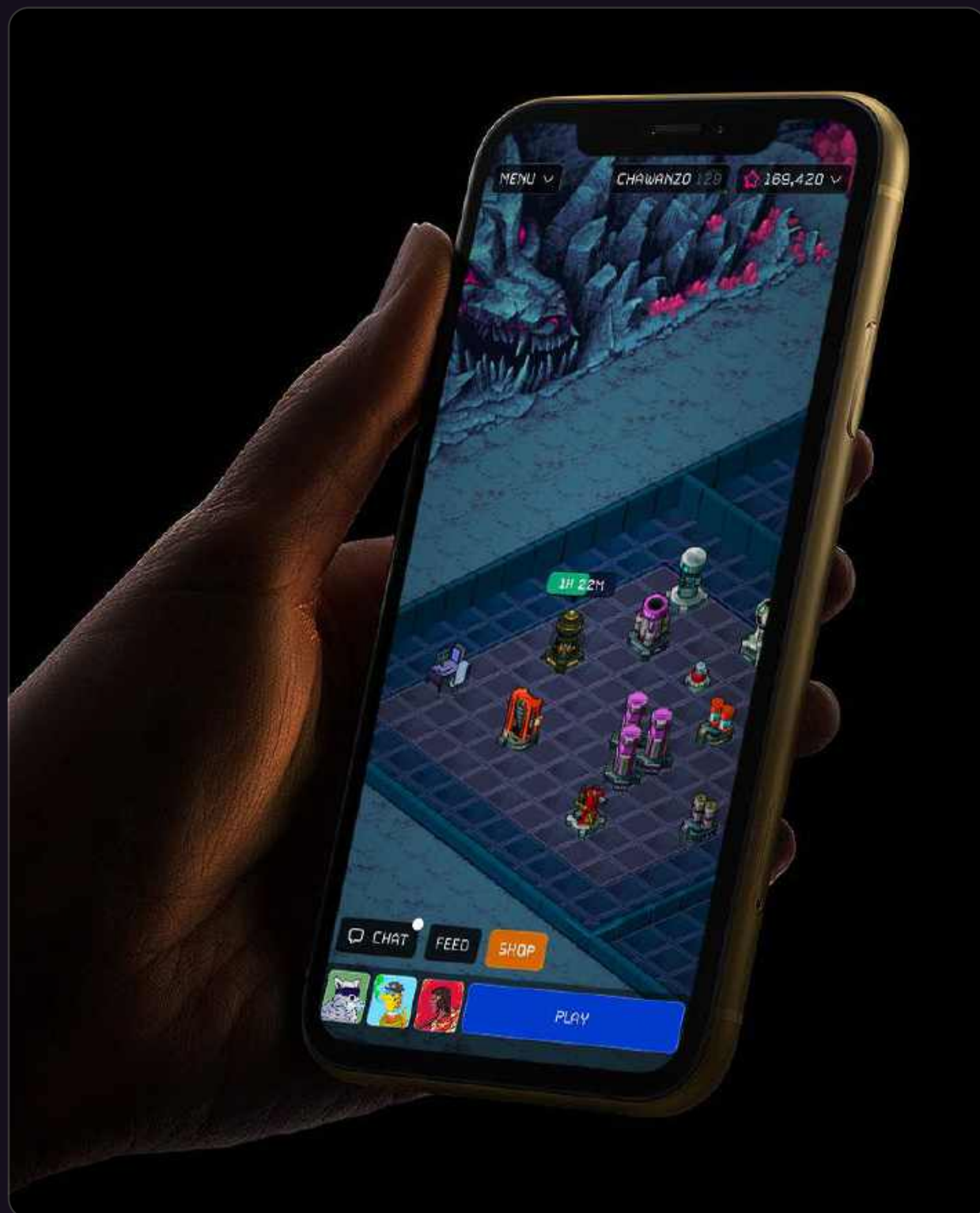
Unlock themed items and collectibles that are unique to the season and unavailable elsewhere.

Free and Premium Tiers

The Battle Pass includes free rewards available to all players and a premium tier with additional rewards for those who upgrade.

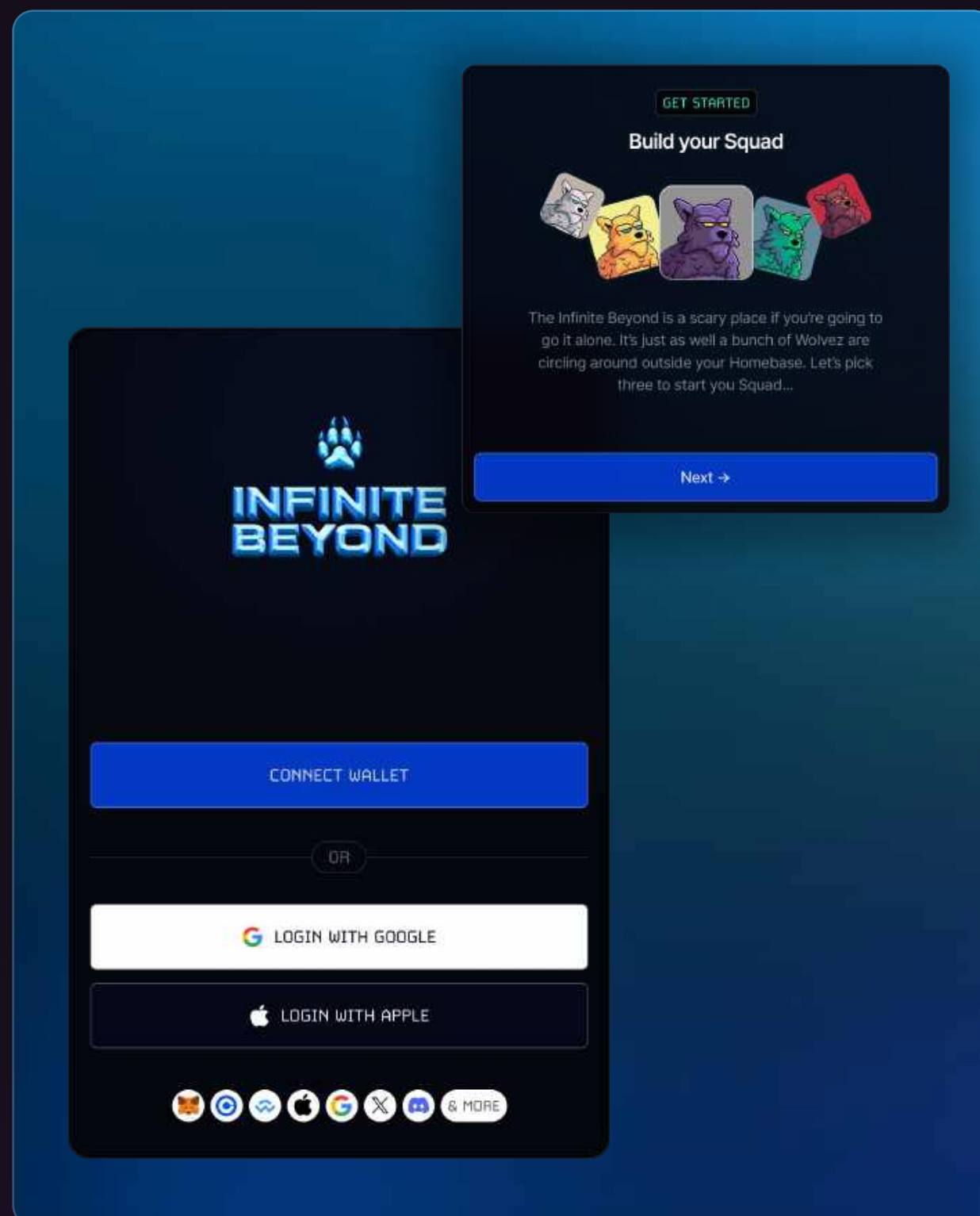
With each new season, Infinite Beyond refreshes the Battle Pass objectives and rewards, giving players a new set of challenges and exclusive items to earn as they climb through all 100 tiers.

Web2 Onboarding



One of our core principles at Infinity Games is to increase the usage of Blockchain and NFT technologies beyond just the Web3 community and towards a more mainstream adoption.

The introduction of Web2 Wolvez is a strategic move to bridge the gap between traditional gamers and the crypto ecosystem of Infinite Beyond. By providing a familiar and accessible gaming experience without requiring immediate knowledge of blockchain or cryptocurrency, we can attract a broader audience. This approach allows non-crypto players to enjoy the game while gradually introducing them to the benefits of Web3 features, such as ownership, play-to-earn mechanics, and decentralized economies, creating a seamless onboarding path into Infinite Beyond's crypto-powered world.



As part of our dedication to this goal, we have also implemented a way for non-Web3 native gamers to play Infinite Beyond without the traditional Web3 wallet setup and complexities.

By signing up and logging in with your preferred social application of choice, you can begin earning resources, building your Homebase, and battling, with no NFTs or cryptocurrencies required.

We support major social platforms including: Apple, Google, X, and Discord. We will add more to this list where we see demand.

Note: each new account generated through a social login will generate a non-custodial wallet. This is to store your progress and in-game items. You can claim the private key to this wallet at anytime.



Off-Chain Currency



In *Infinite Beyond*, players use three main currencies to fuel their progress:

Neon Gold and Space Elixir

These primary resources are essential for building and upgrading structures within your base. Collected from Neon Gold/Space Elixir Mines, it's the foundation for expanding your base defenses and infrastructure.

Dark Matter

The premium currency, can be purchased and used to speed up upgrades, instantly finish builds, buy special packs, and gain various boosts. Dark Matter offers flexibility, allowing players to accelerate progression across all game aspects.

Note

Each resource type is needed to unlock various Machines, upgrades, Troops, and Boosts.

Players will need to carefully balance the generation of their resources and ensure that they have enough storage capacity to reach higher level upgrades.

On-Chain Currency: Stardust



\$STARDUST

Core to the experience of the Infinite Beyond game and Star Wolvez ecosystem is our utility token Stardust. A token to unite all NFT collectors and Web3 gamers on all chains.

Staking

Earn rewards and support the ecosystem by staking \$STARDUST or NFTs.

In-Game Progression

Complete objectives, purchase Battle Passes, and claim seasonal rewards using \$STARDUST.

Exclusive Purchases

Use \$STARDUST to buy in-game NFTs, Star Wolvez traits, animations, and physical items.

Competitive Play

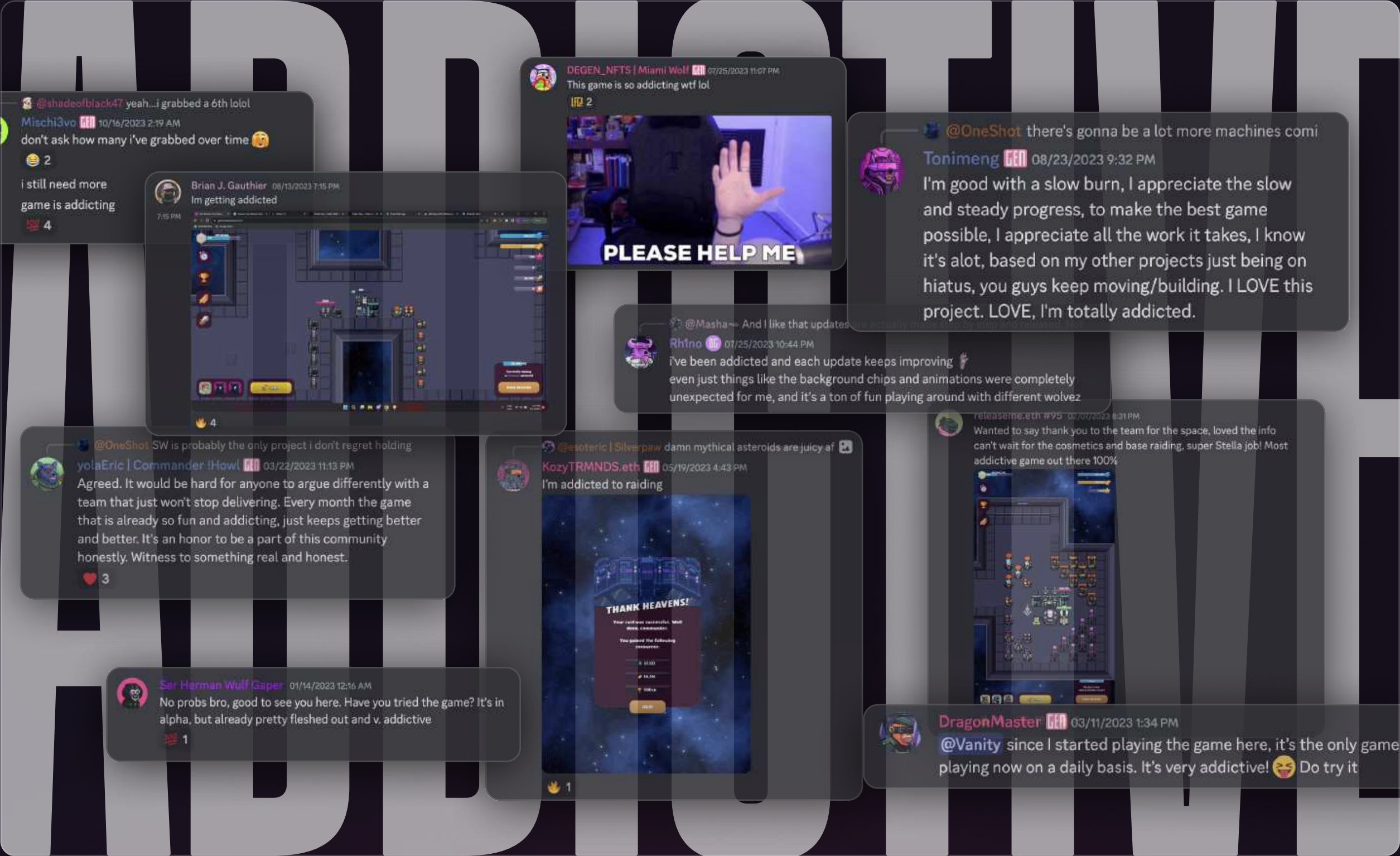
Wager \$STARDUST in PvP matches and join special tournaments.

Future Mints

Mint upcoming NFT characters and items for infinite beyond expansions.

These uses make \$STARDUST a versatile utility token, rewarding engagement and enhancing gameplay.

Alpha Test



Soft Staking

In the Alpha phase of game development, each Star Wolf, Galactic Ape, and Galactic Monke yielded a fixed amount of \$STARDUST daily:

In order for a Star Wolf or a Galactic Ape to have entered the staking pool, the wallet in which they are stored needed to have connected to the game and played at least once.

We are currently offering a last call for Star Wolvez and Galactic Apes NFT holders who haven't yet connected their wallets to the game. Until December 31, 2024, these holders have the opportunity to connect and register their assets, allowing them to earn \$STARDUST rewards through soft staking in alpha. Visit the Alpha version to register your wallet [here](#).

Daily Yield

Star Wolvez Genesis yield 50 \$STARDUST per day

Star Wolvez Generative yield 5 \$STARDUST per day

Galactic Apes Genesis yield 8 \$STARDUST per day

Galactic Apes Generative yield 2 \$STARDUST per day

Galactic Monkes yield 1 \$STARDUST per day

Beta



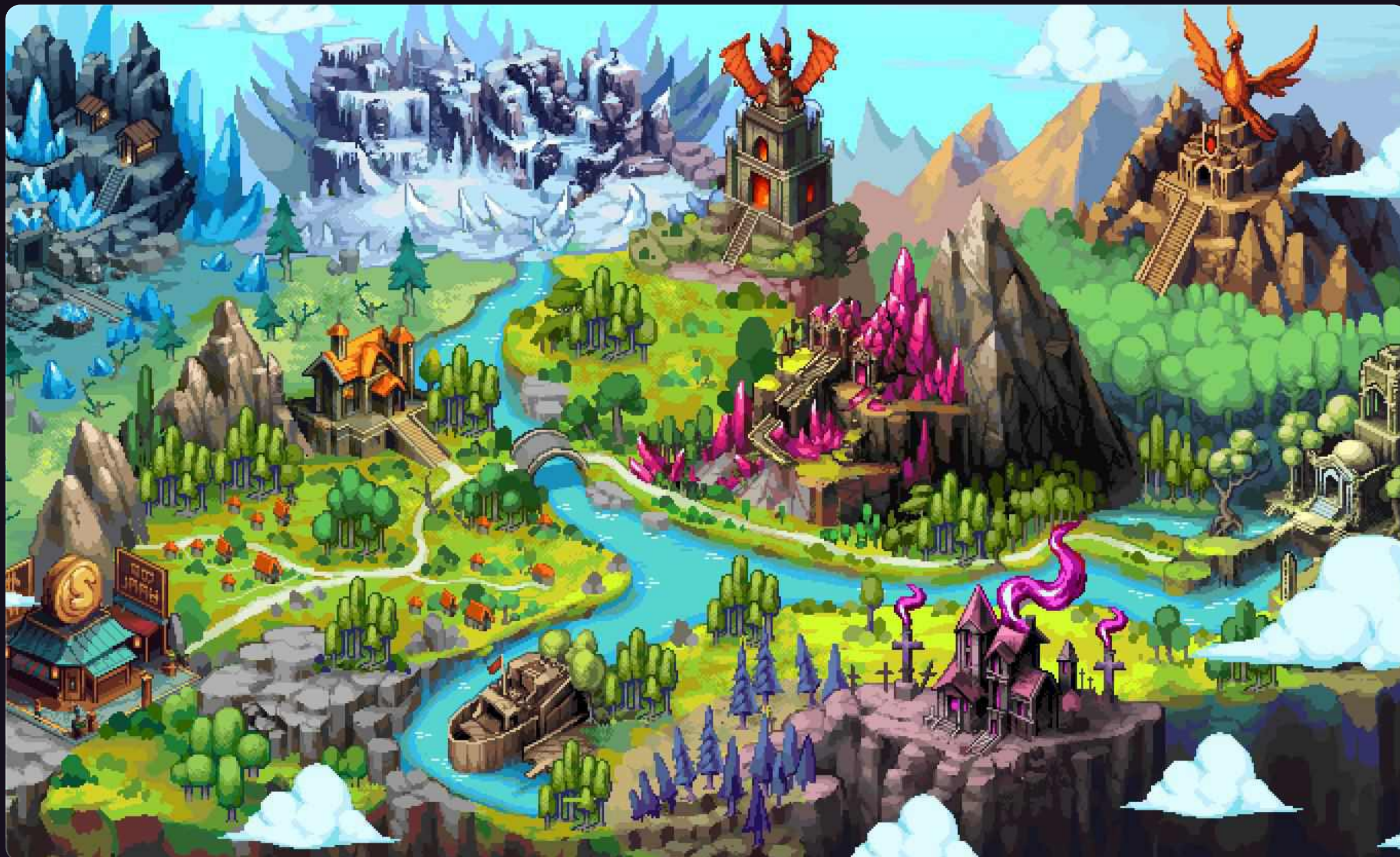
Staking

In the Beta, players must actively stake their Infinite Beyond ecosystem NFTs to unlock \$STARDUST rewards. This staking mechanic ties \$STARDUST earnings directly to NFT ownership, rewarding holders who actively participate in the ecosystem.

When an NFT is listed for sale, staking is temporarily paused. During this pause, no additional \$STARDUST can be unlocked, encouraging players to commit to their staking if they wish to continue earning rewards. If the NFT is delisted, staking resumes, and players can continue unlocking \$STARDUST as usual.

If a player transfers or sells their staked NFT, any accumulated \$STARDUST transfers along with the NFT to the new owner's wallet. This ensures that \$STARDUST rewards stay tied to the NFT itself, rather than to the original owner. The new owner, however, must complete a 7-day soft staking period before they can claim the transferred \$STARDUST. This soft staking period helps maintain stability in the rewards system, ensuring that NFT rewards go to long-term holders and participants who are invested in the ecosystem.

Roadmap



Co-operative Boss Battles: Team up with other players to defeat powerful bosses for epic rewards.

Proximity Raiding: Engage in strategic PvP raids with proximity-based troop deployments, adding depth to resource battles.

PvE Campaigns & Endless Dungeons: Embark on story-driven campaigns and explore endless dungeons for leveling and rare loot.

PvP Tournaments: Compete in skill-based tournaments to prove yourself against other players and climb the leaderboards.

Shards: A performance-based currency earned in Infinite Arena and Blood Arena, used to unlock powerful items in the Arena shop.

Augments: Equipable enhancements for characters, adding depth to battle strategies in both Infinite Arena and Blood Arena.

Galactic Ships?! Prepare for potential space-based gameplay, introducing new mining and Expedition mechanics and exploration opportunities.

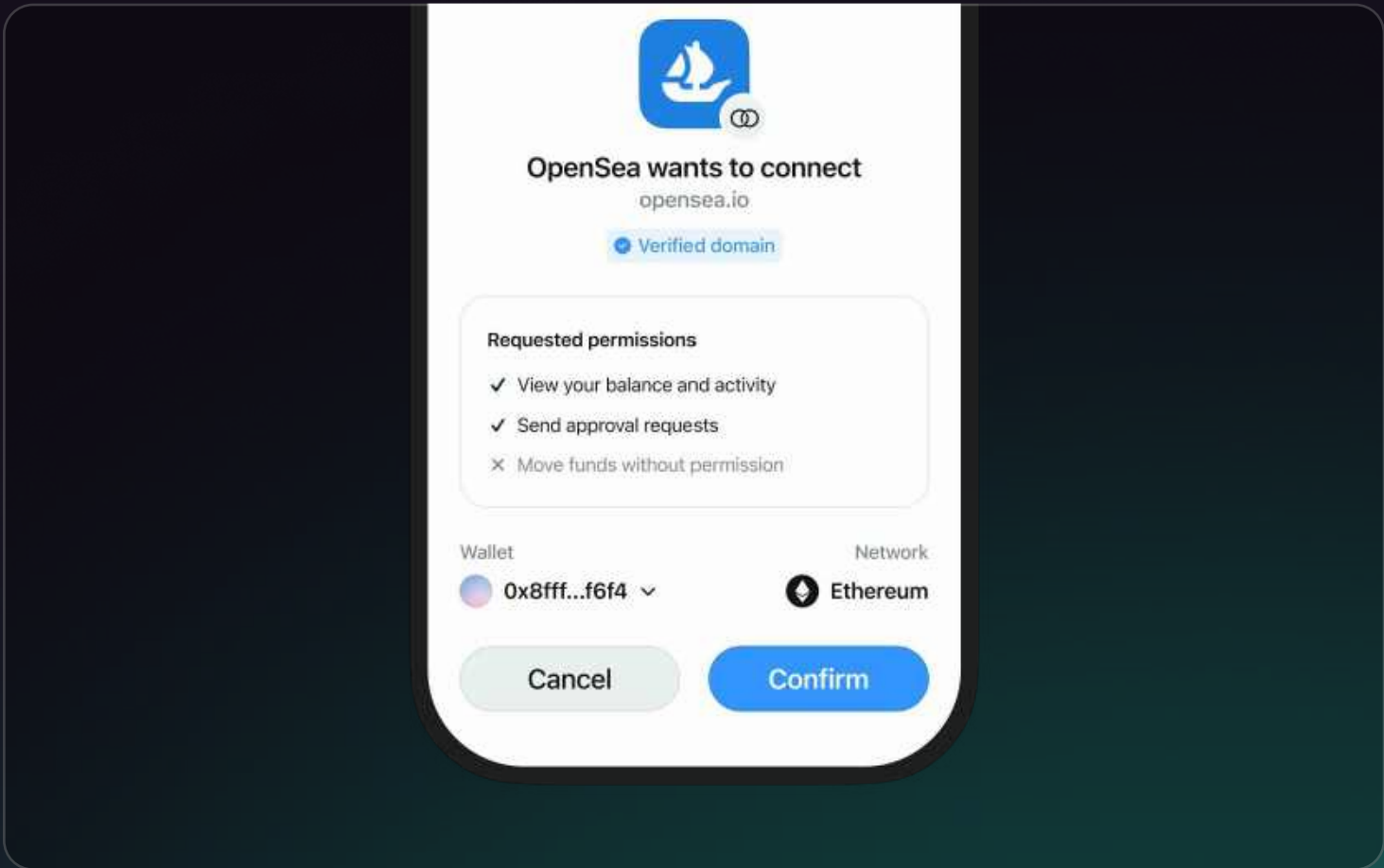
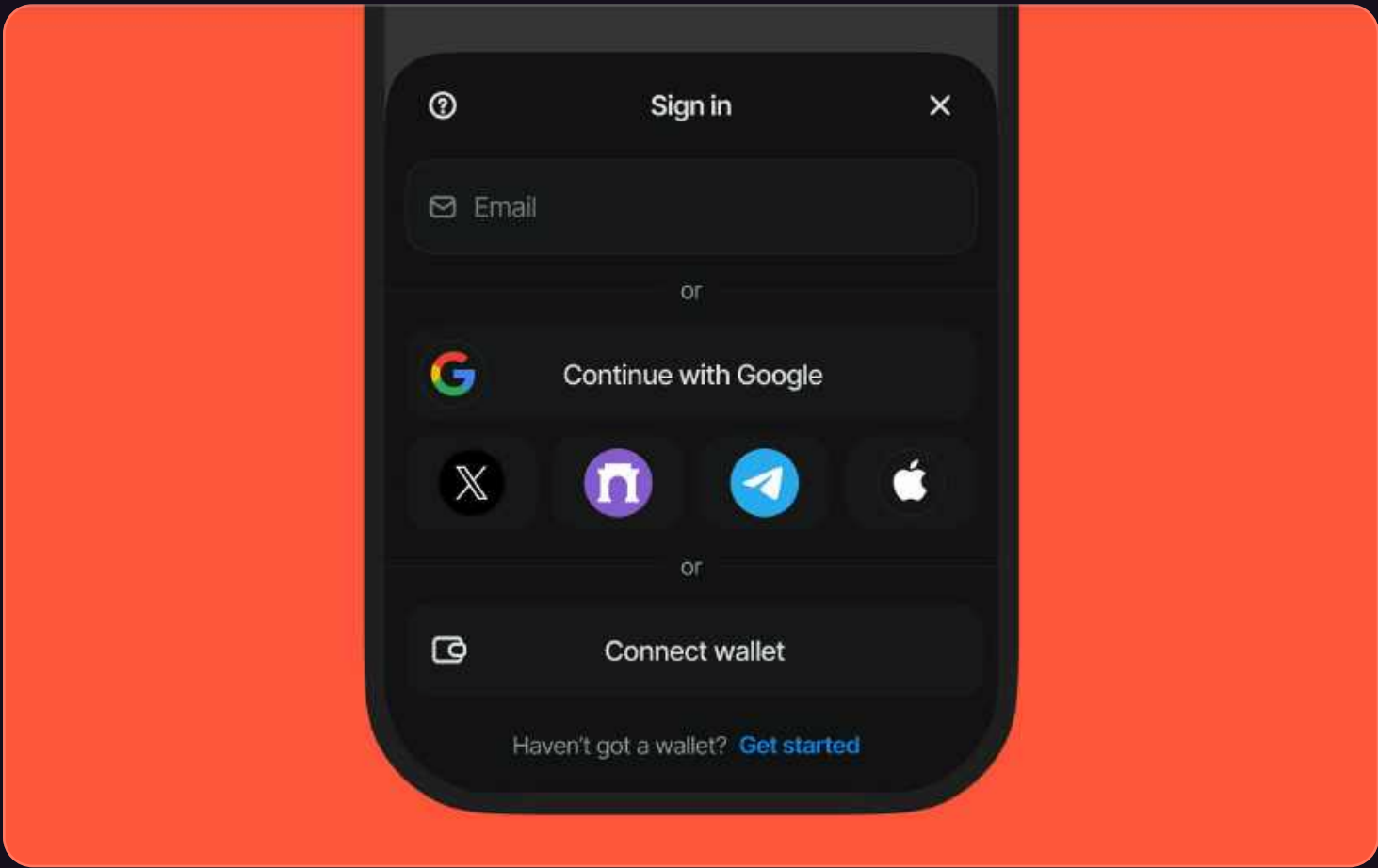
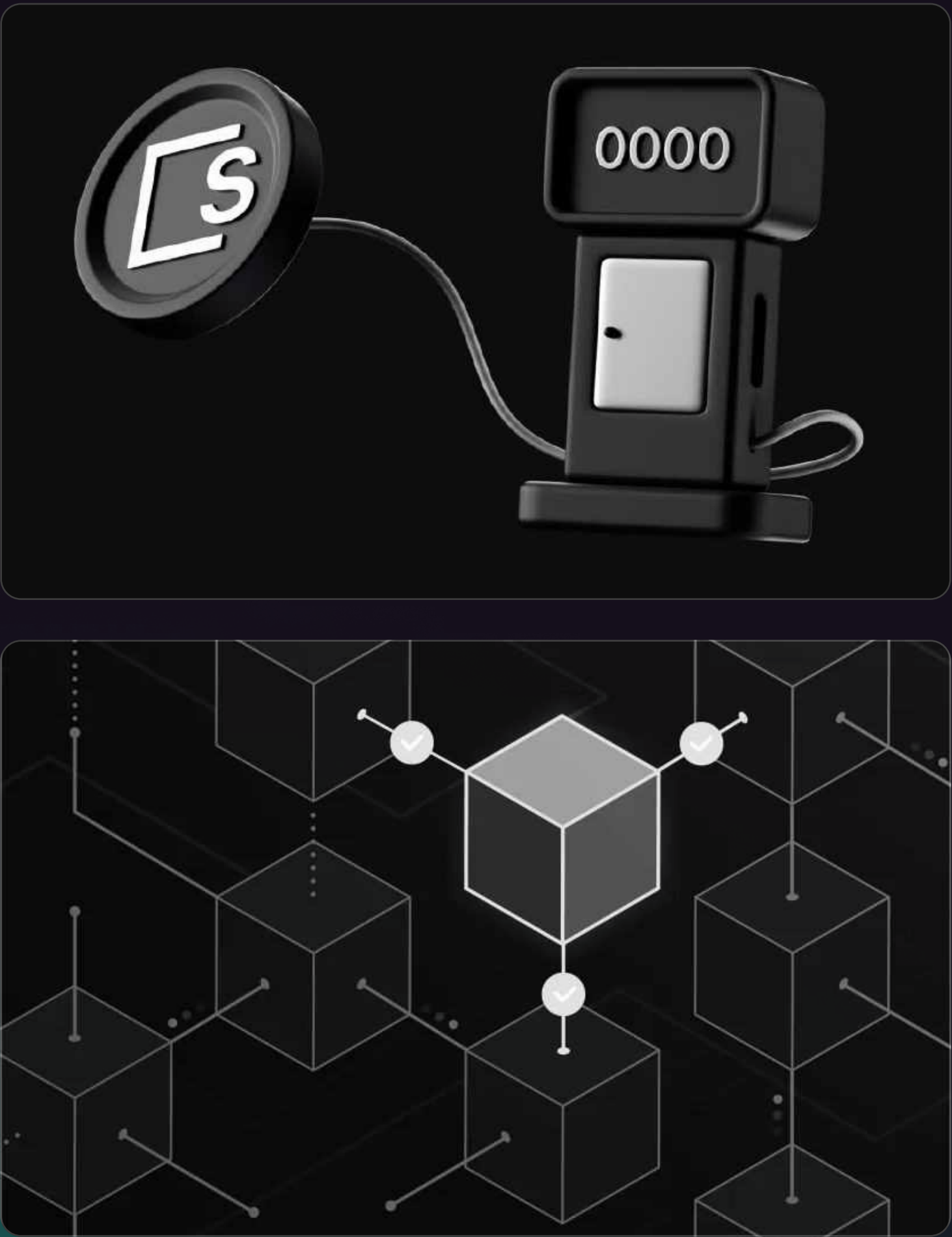
Future Game Modes: Stay tuned for even more modes to enhance and diversify your galactic adventure!



SKALE NETWORK

Skale Network is a decentralized blockchain optimized for high-performance, low-cost applications, perfect for gaming. With scalable, zero-gas transactions, Skale enhances user experience by eliminating fees and delays.

Infinity Games partnered with Skale to power Infinite Beyond, enabling seamless, gasless in-game transactions. This collaboration ensures smooth onboarding for Web3 newcomers and seasoned players, aligning with Infinity Games' vision of accessible, enjoyable blockchain gaming.



REOWN

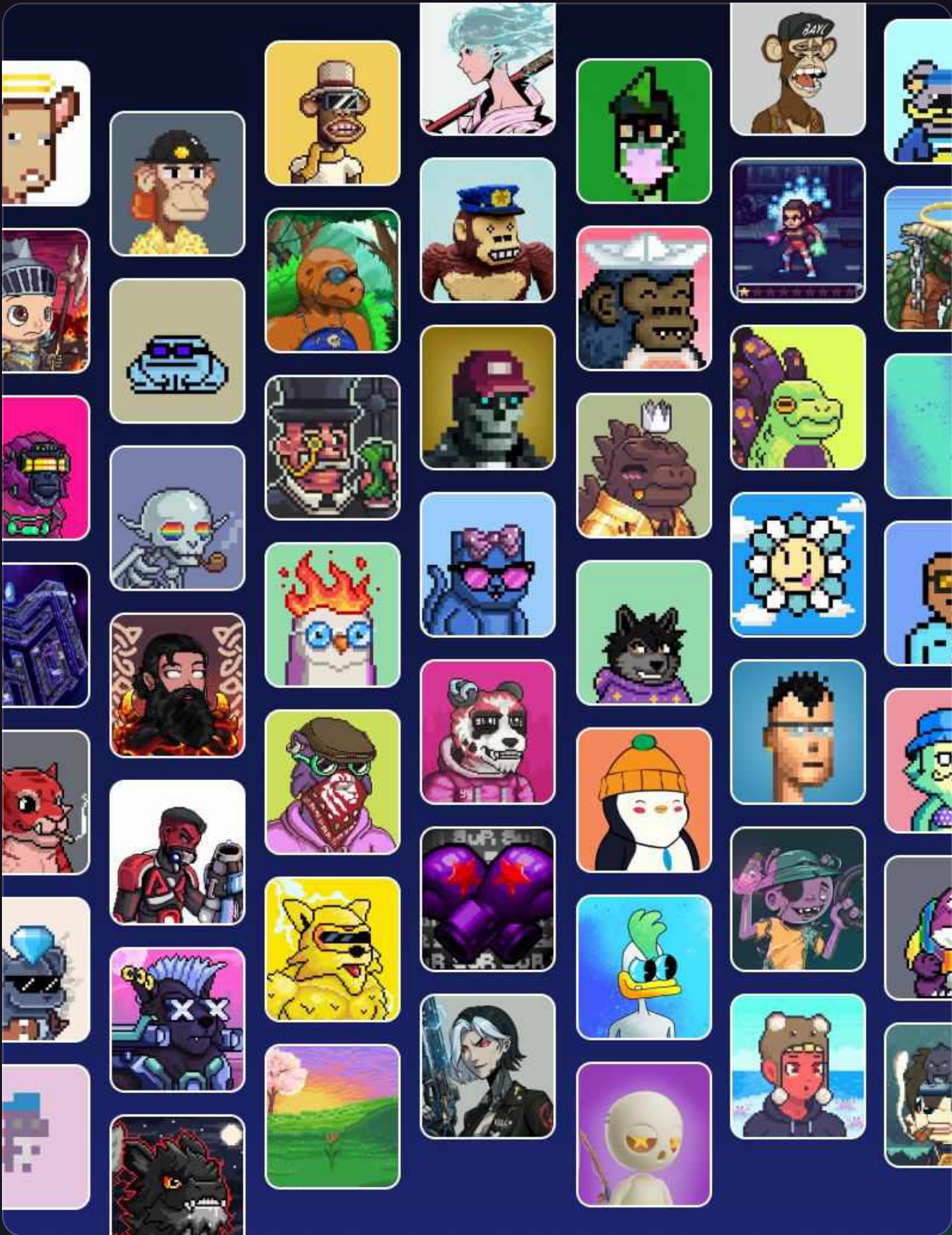
Reown is a blockchain onboarding platform that simplifies Web3 access by streamlining wallet creation, asset management, and account setup, lowering the barrier to blockchain gaming.

Partnering with Infinity Games, Reown powers Infinite Beyond with seamless onboarding, enabling players—especially Web3 newcomers—to easily access game features, manage assets securely, and dive into the ecosystem hassle-free. This collaboration supports Infinity Games' mission to make Web3 gaming accessible and enjoyable for all.

METaverse HQ

Metaverse HQ (MVHQ) is a top community for Web3 enthusiasts, NFT collectors, and crypto investors, offering exclusive events, insights, and a network of innovators shaping the future of Web3.

Infinity Games partnered with MVHQ to expand Infinite Beyond's reach. MVHQ members gain early access to beta testing, exclusive content, and special in-game assets, fostering engagement and growth. This collaboration strengthens Infinity Games' player-focused Web3 vision by integrating community feedback and support.



INDEXED COLLECTIONS

Infinite Beyond is the most interoperable Web3 game, allowing players from 100+ NFT collections to use their NFTs as playable characters. It transforms profile pictures into dynamic in-game assets, enabling players to build, battle, and explore.

By integrating diverse NFTs, Infinite Beyond creates value for holders and unites communities in a shared universe with unique experiences and gameplay. It's a future where any PFP NFT becomes more than a profile picture—a gateway to a vibrant Web3 gaming world.

Premium Collections



In Infinite Beyond, we've collaborated with our premium communities to introduce exclusive machines that offer unique in-game perks to NFT holders. Each partner machine provides specific benefits, giving players additional advantages as they build and expand their bases.

One example is the Little Lemon Tree machine, created in partnership with the Little Lemon Friends. This machine allows players to collect additional Neon Gold each day, with payout amounts varying based on machine level and other factors. These exclusive machines not only offer valuable in-game resources but also enhance gameplay by adding unique, themed functionality tied to each partner community.

By integrating these partner-exclusive machines, Infinite Beyond adds more depth to the base-building experience and encourages collaboration across Web3 communities, giving NFT holders tangible benefits that boost their progression in the game.

Disclaimer

This Litepaper ("Litepaper") and the Websites are intended for general informational purposes only and do not constitute a prospectus, an offer document, an offer of securities, or capital markets products, or digital payment tokens, or a solicitation for investment, or any offer to sell any product, instrument, or asset (whether digital or otherwise). The information herein may not be exhaustive and does not imply any element of a contractual relationship.

There is no assurance as to the accuracy or completeness of such information and no representation, warranty or undertaking is or is purported to be provided as to the accuracy or completeness of such information.

Nothing contained in the Litepaper or the Websites is or may be relied upon as a promise, representation or undertaking as to the future performance of Stardust.

The information set out in the Litepaper and the Websites is for community discussion only and is not legally binding. No person is bound to enter into any contract or binding legal commitment in relation to the acquisition or receipt of \$STARDUST, and no digital asset or other form of payment is to be accepted on the basis of the Litepaper or the Websites.

The agreement for distribution of \$STARDUST and/or continued holding of \$STARDUST shall be governed by a separate set of terms and conditions setting out the terms of such distribution and/or continued holding of \$STARDUST which shall be separately provided to you or made available on the Website.

No regulatory authority has examined or approved, whether formally or informally, any of the information set out in the Litepaper or the Websites. No such action or assurance has been or will be taken under the laws, regulatory requirements or rules of any jurisdiction. The publication, distribution or dissemination of the Litepaper or the Websites does not imply that the applicable laws, regulatory requirements or rules have been complied with.